



# MINIHOUSE 25

ASSEMBLY INSTRUCTION

ARCTIC FINLAND HOUSE



## **MINIHOUSE 25 III**

**\*Timber frame 135 x 135, 135 x 190** + screws 6 x 150

---

**\*Wall elements** + screws 5 x 80

---

- Pine panel 44 mm
- Frame 50 mm
- Isolation polyuretan 50 mm

**\*Other materials for outside walls** + screws

---

- Pine panel 18 mm
- Slat (prof. 5) 70 mm
- L-slat (prof. 31) 20 mm
- Slat (prof. 36) 45 mm
- Tin plate
- Uretan

**\*Windows and double door**

---

**\* Outside door, inside door**

---

**\*Floor material** + screws

---

- Frame 48 x 98 ( or 50 x 100)
- Floor panel 28 x 95
- Isolation polyuretan 70 mm

**\*Inside wall materials** + screws

---

- Pine panel 18 mm
- Frame 50 x 50
- Isolation polyuretan 50 mm

**\*Inside roof materials ( bath room)** + screws

---

- Pine panel 18 mm
- Frame 50 x 50
- Isolation polyuretan 50 mm

**\*Floor materials for loft** + screws

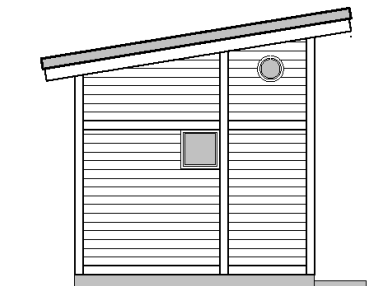
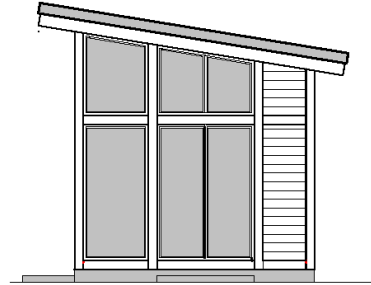
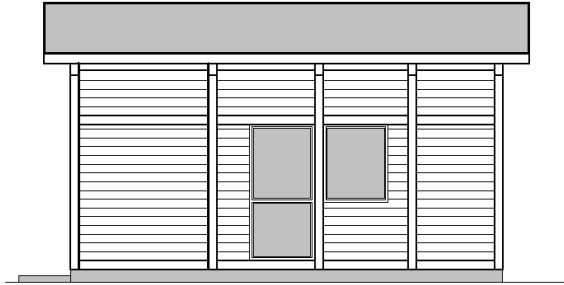
---

- Frame 50 x 100
- Pine panel 44 mm

**\*Roof elements ( Izopanel )** + equipments

---

- Grey tin + polyuretan 160 mm + white tin ( inside)



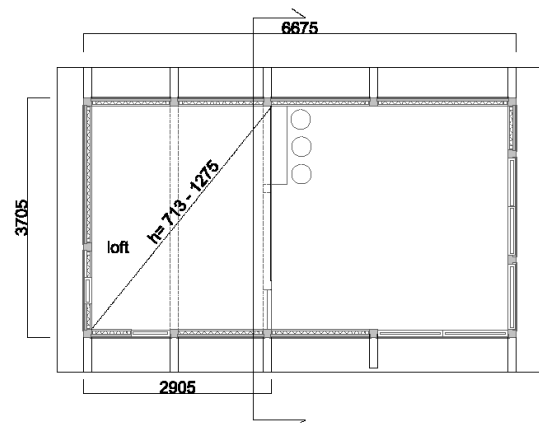
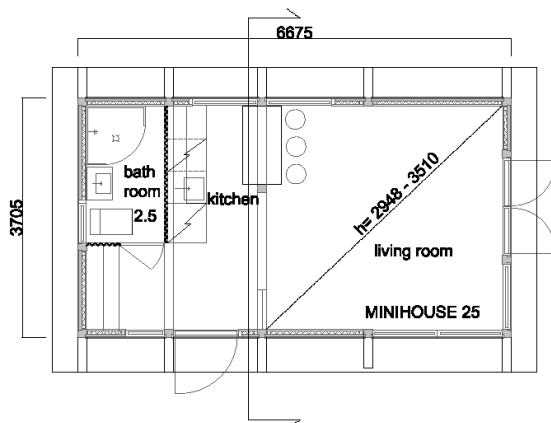
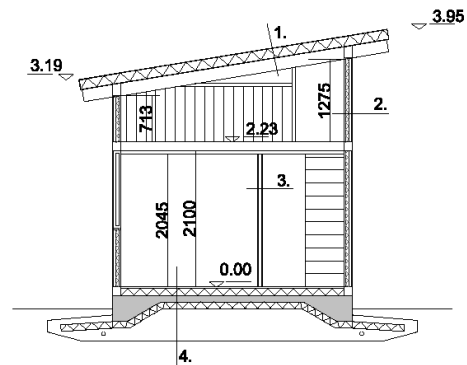
**MINIHOUSE 25 III**  
25 m<sup>2</sup> / 80m<sup>3</sup>

1. Roof  
U=0.13 W/m<sup>2</sup>K  
Roof element IZO Roof PUR with  
isolation polyuretan 160 mm  
Timber frame 135 x 190

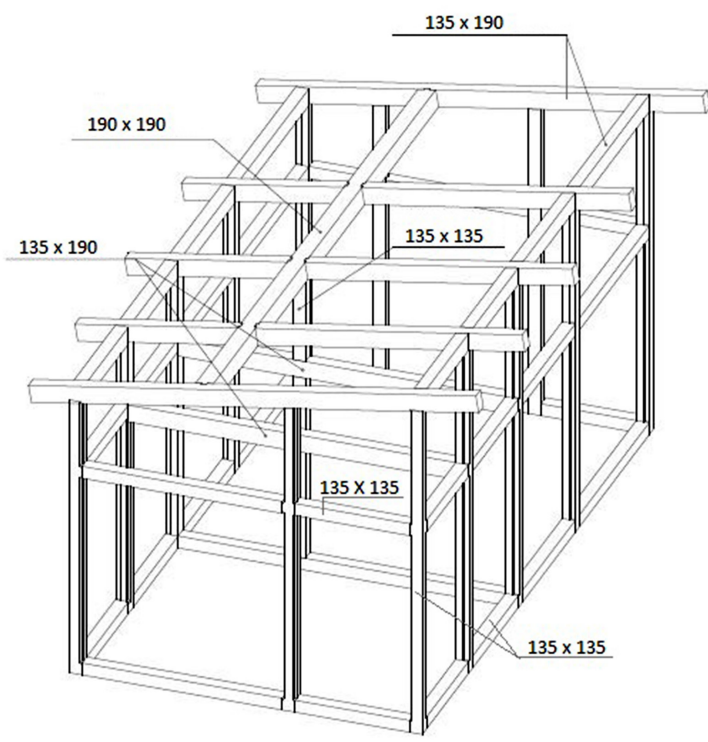
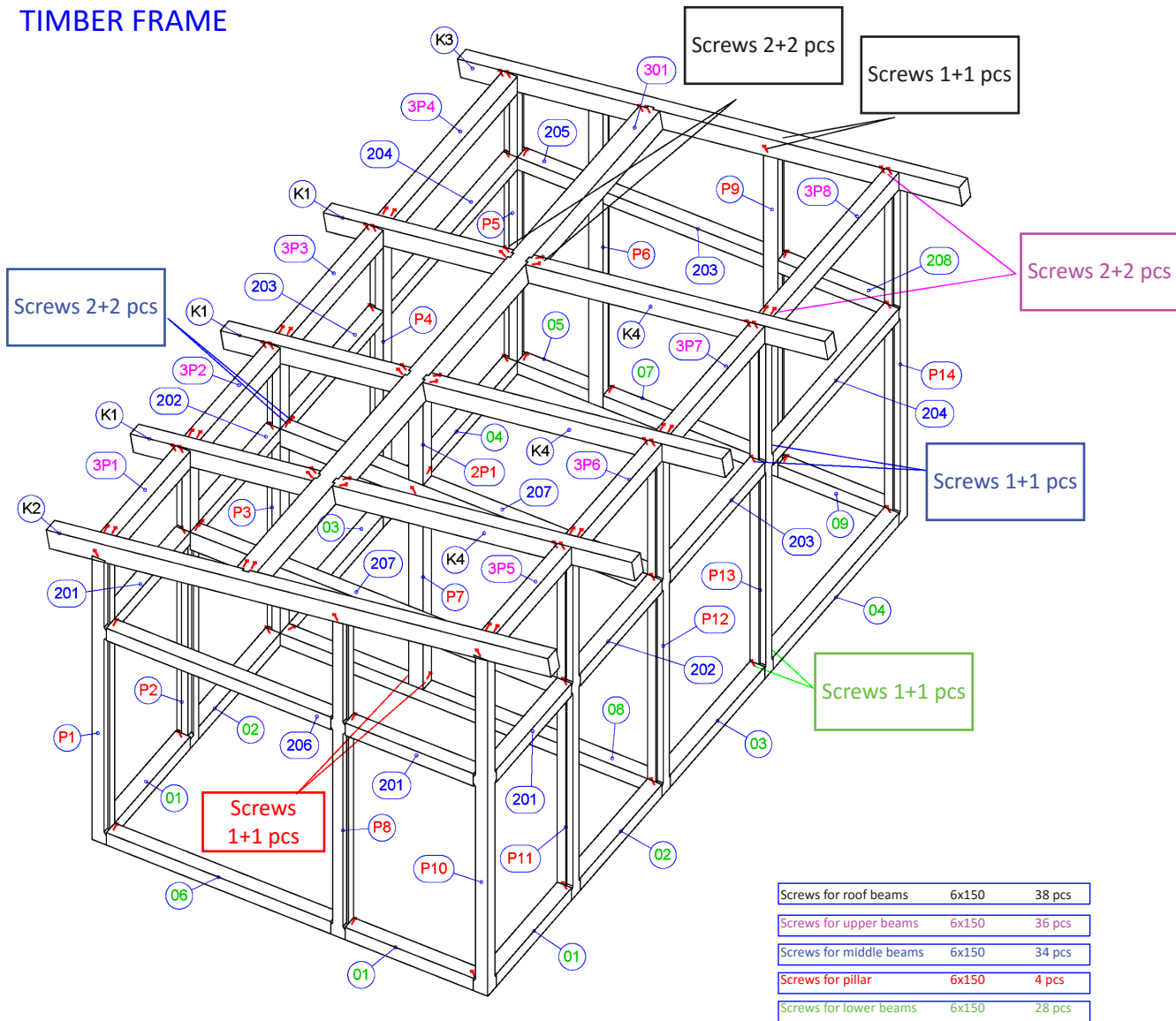
2. Wall  
U= 0.42 W/m<sup>2</sup>K  
Timber frame 135 x 135  
Pine panel 44 x 145  
Isolation polyuretan 50  
Pine panel 18

3. Inside wall  
Pine panel 18  
Frame 50  
Pine panel 18

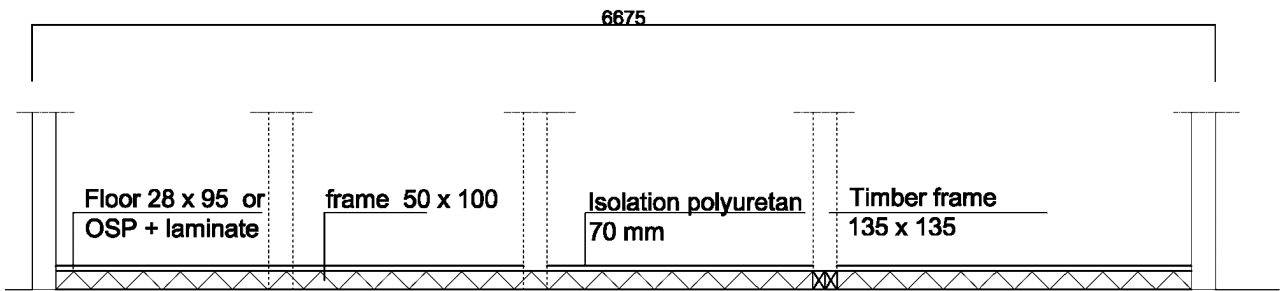
4. Floor  
U=0.16  
Pine panel 28  
Floor frame  
Isolation polyuretan 70



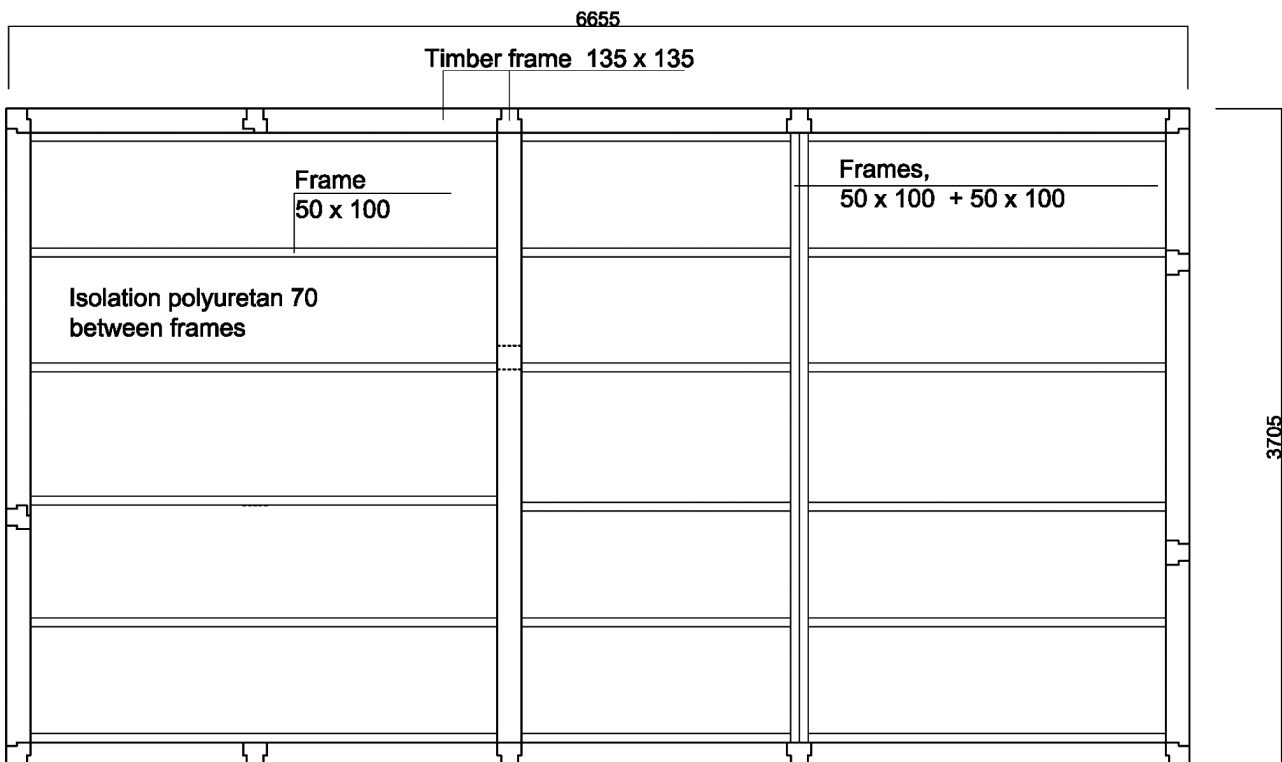
# TIMBER FRAME



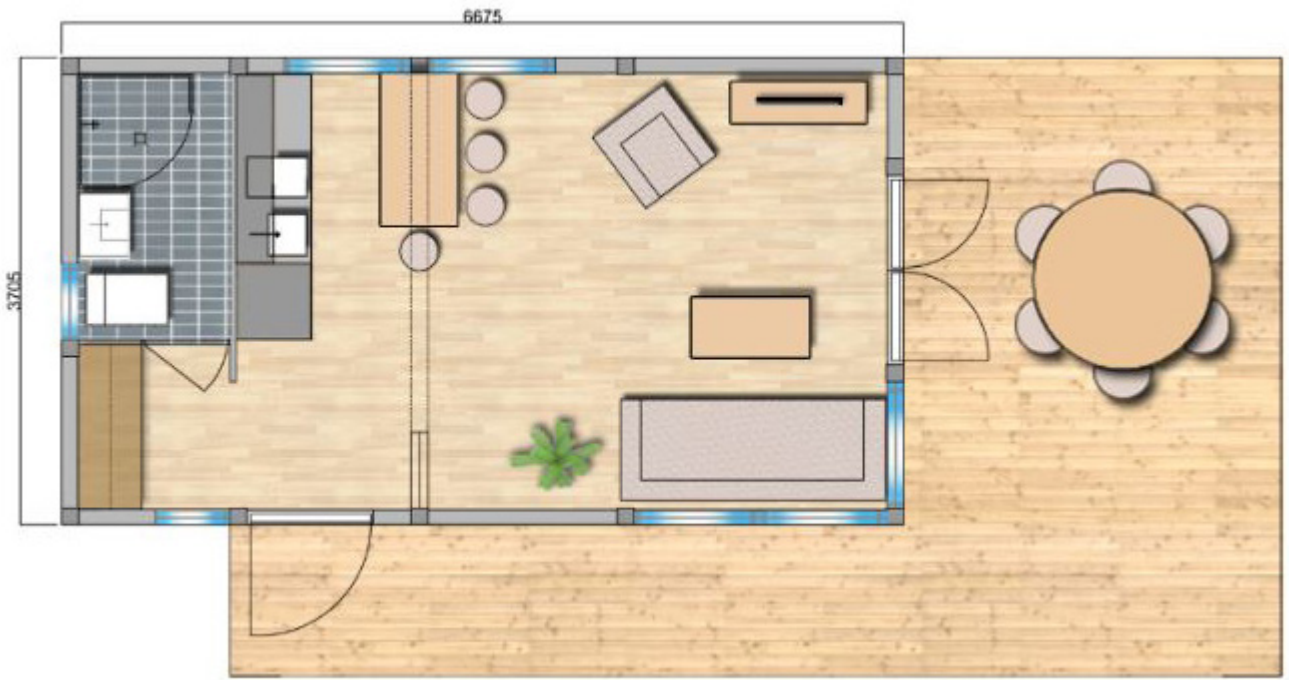
## FLOOR SECTION

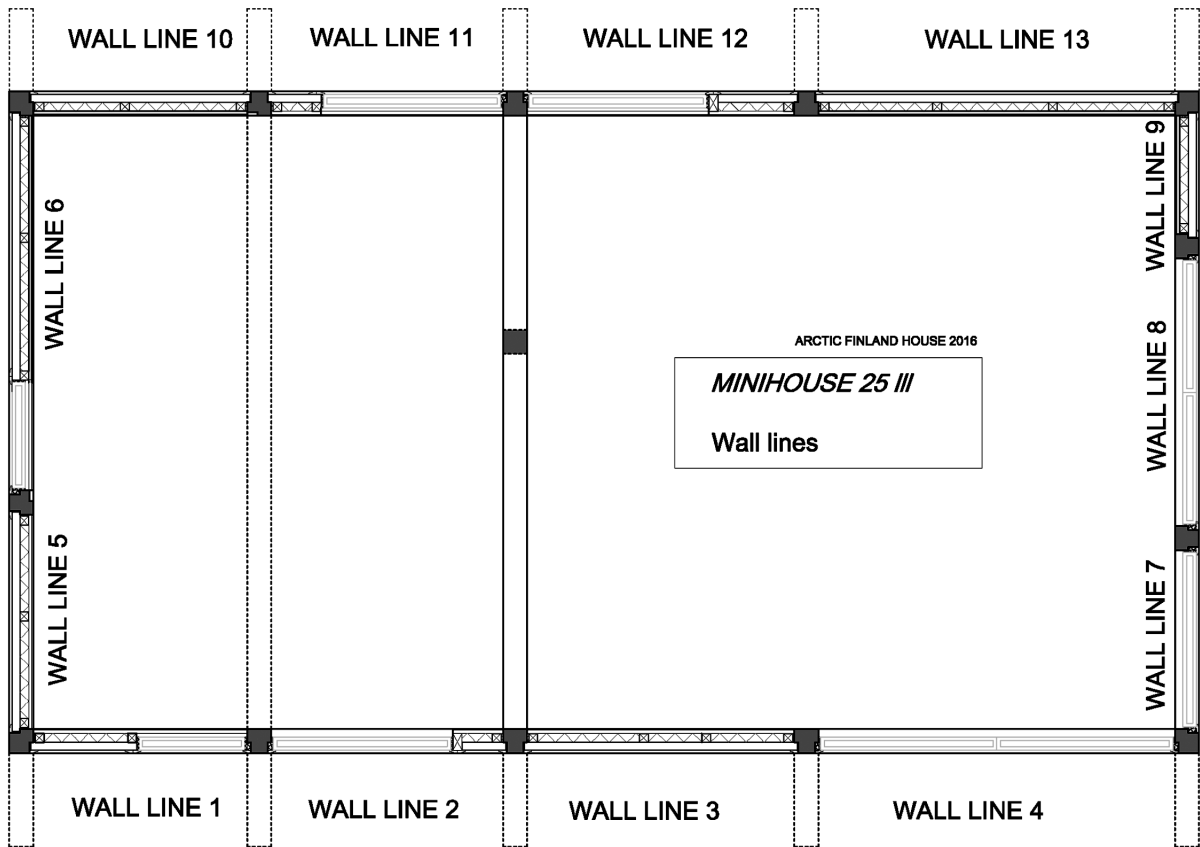


## FLOOR LAYOUT

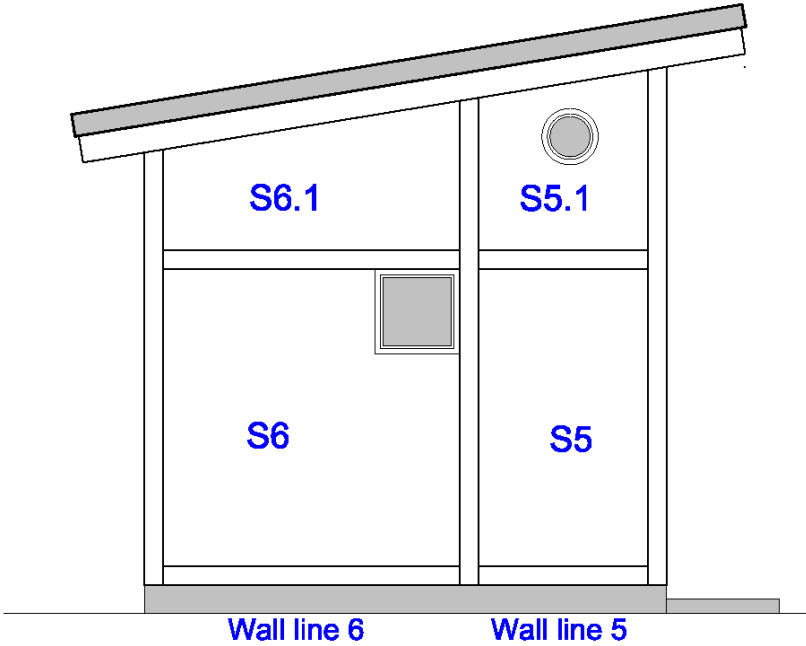
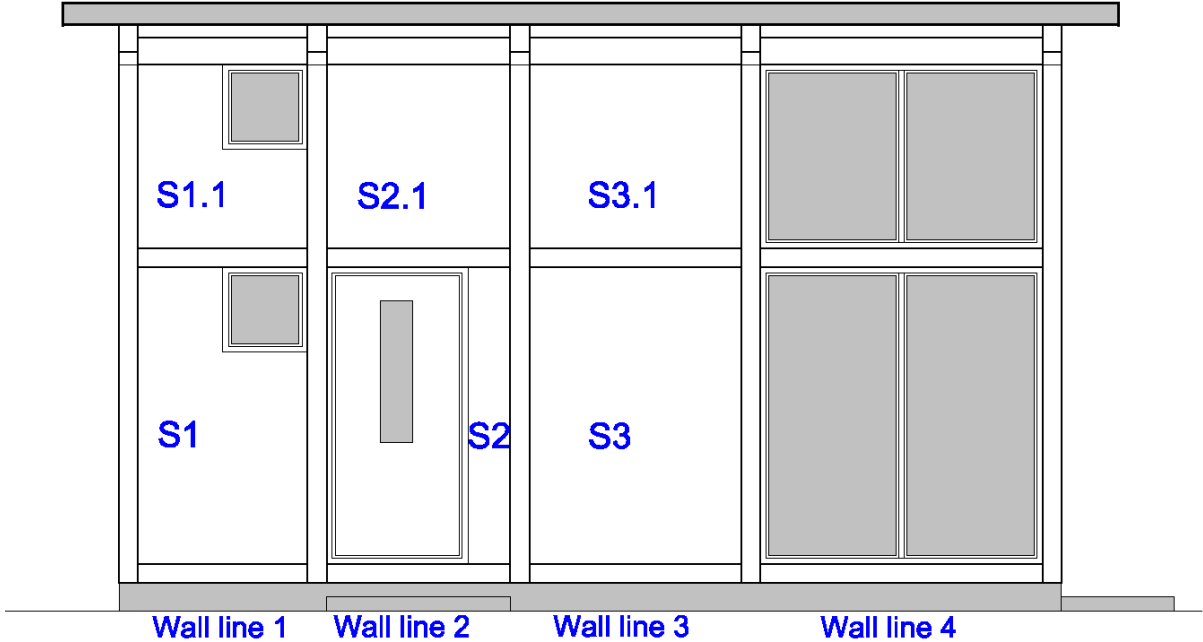


ARCTIC FINLAND HOUSE  
17.3.2016

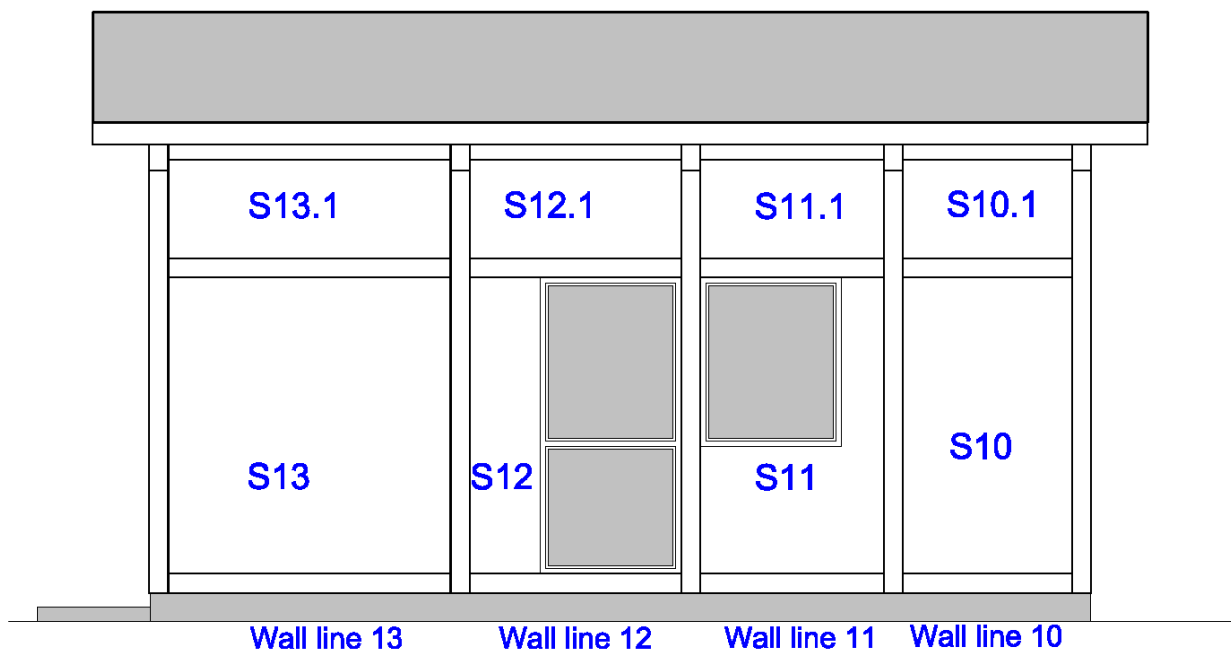
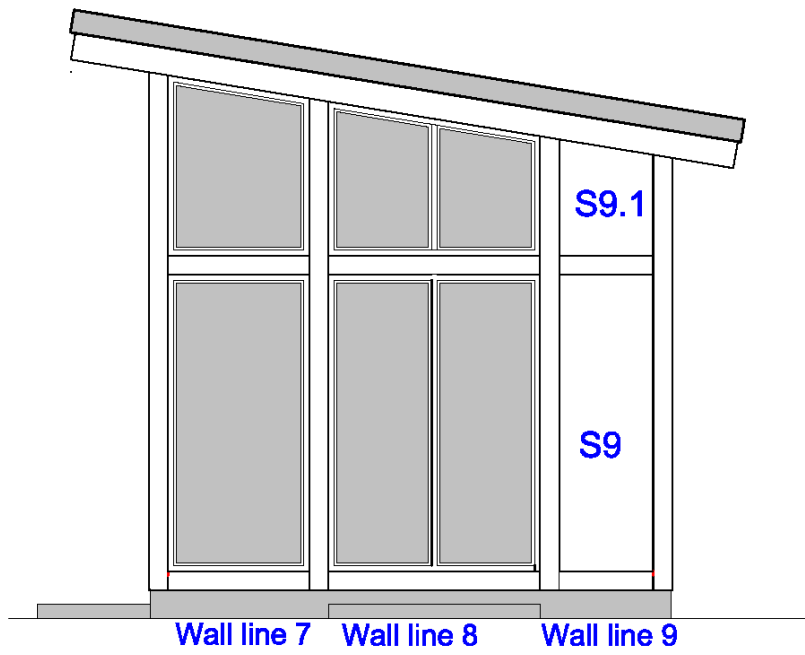




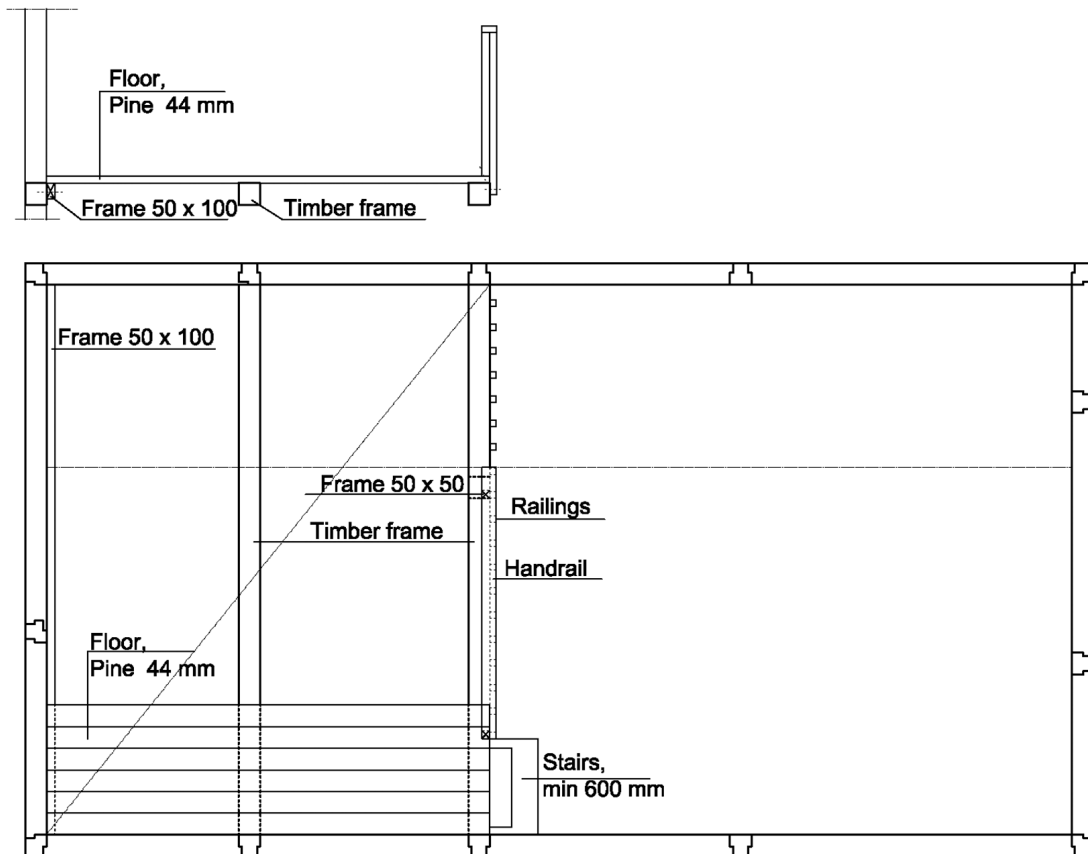
WALL ELEMENTS





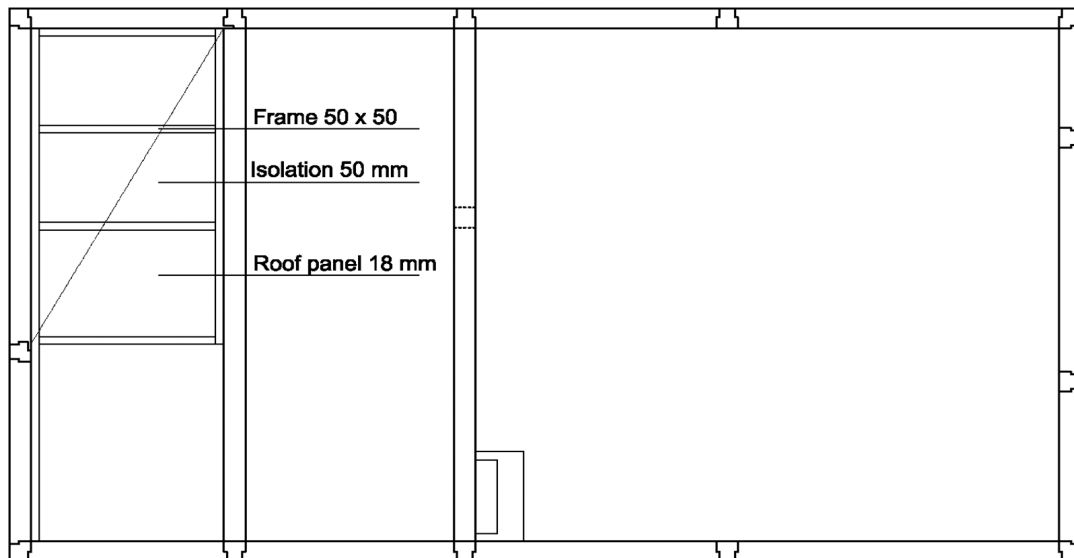


## LOFT FLOOR - RAILINGS - STAIRS



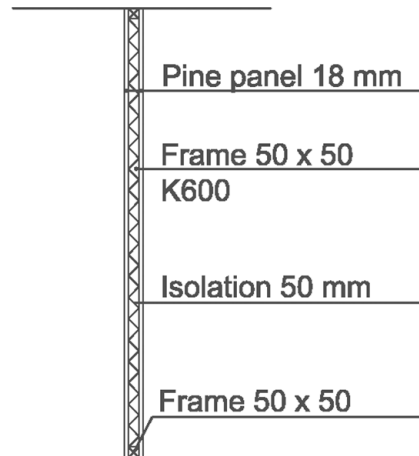
ARCTIC FINLAND HOUSE  
14.6.2016

## ROOF FOR BATHROOM



ARCTIC FINLAND HOUSE  
14.6.2016

INSIDE WALL



MINIHOUSE 25 - ATTEFALLSHUS 25  
25 m<sup>2</sup> / 80 m<sup>3</sup>

**ARCTIC FINLAND HOUSE**

[WWW.ARCTICFINLAND.COM](http://WWW.ARCTICFINLAND.COM)

16.06.2016

